

# MONTHLY MEMBERSHIP PROGRESS REPORT

District 11 B2

Results as of: 4/30/2024

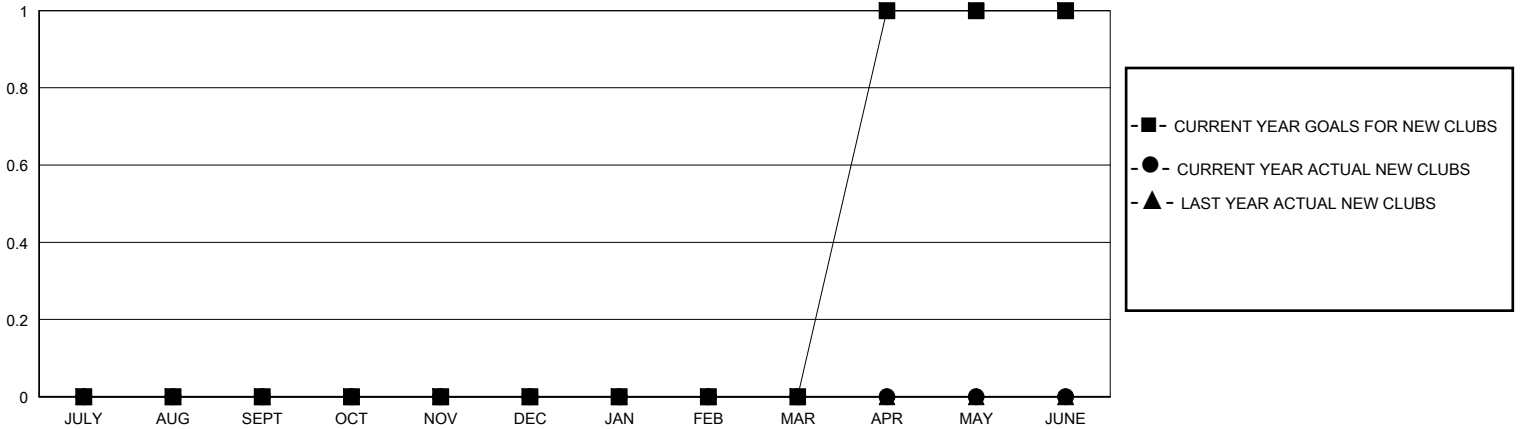
GMT:

LOCATION MICHIGAN

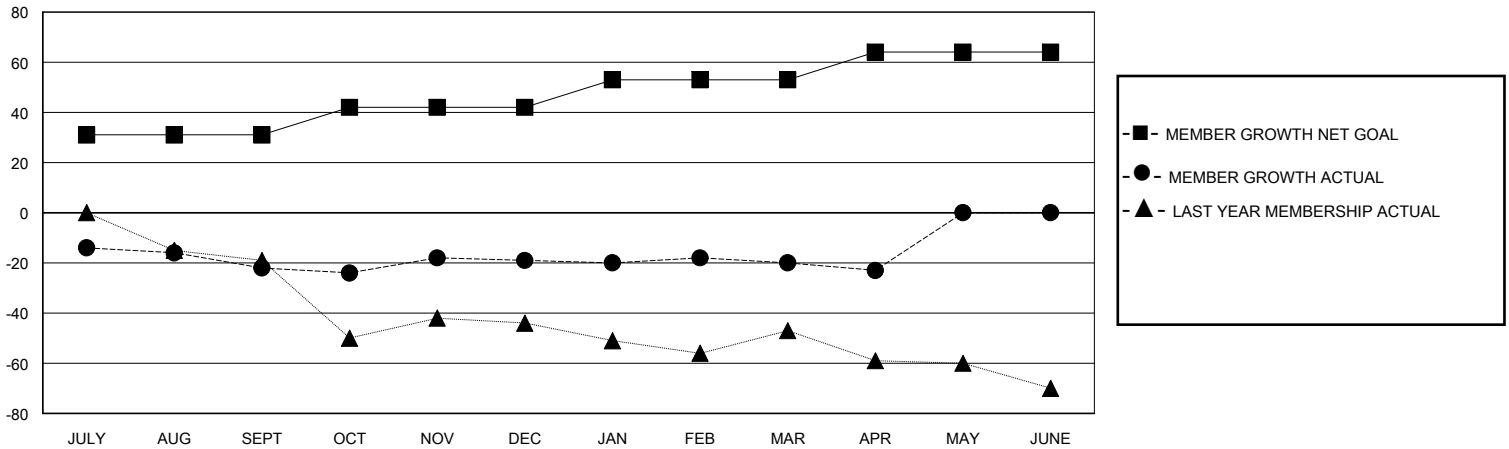
GMT CA

Clubs				Members			
RESULTS FOR 2023-2024				RESULTS FOR 2023-2024			
QUARTER	NEW CLUB GOAL	NEW CLUBS	DROPPED CLUBS	QUARTER	MEMBER GROWTH NET GOAL	MEMBER GROWTH ACTUAL	DROPPED MEMBERS ACTUAL (including transfers)
JULY/AUG/SEPT	0	0	2	JULY/AUG/SEPT	31	17	37
OCT/NOV/DEC	0	0	0	OCT/NOV/DEC	11	20	16
JAN/FEB/MAR	0	0	0	JAN/FEB/MAR	11	12	12
APR/MAY/JUNE	1	0	0	APR/MAY/JUNE	11	3	5

GOALS AND ACTUAL NEW CLUBS CUMULATIVE



GOALS AND ACTUAL MEMBERS CUMULATIVE



<b>DROPPED CLUBS: 2</b>	18 CLUBS OF 33 ADDED 1 OR MORE NEW MEMBERS	<b>GENDER DISTRIBUTION</b>
<b>DROPPED MEMBERS</b>	<a href="#">CLICK HERE FOR CUMULATIVE MEMBERSHIP DATA</a>	MALE 518 (63.64%)
DECEASED 14		FEMALE 295 (36.24%)
CLUB CANCELLED 0		TOTAL FAMILY UNIT MEMBERS 199
OTHER 56		FAMILY MEMBERS PAYING HALF DUES 100
<b>TOTAL 70</b>		